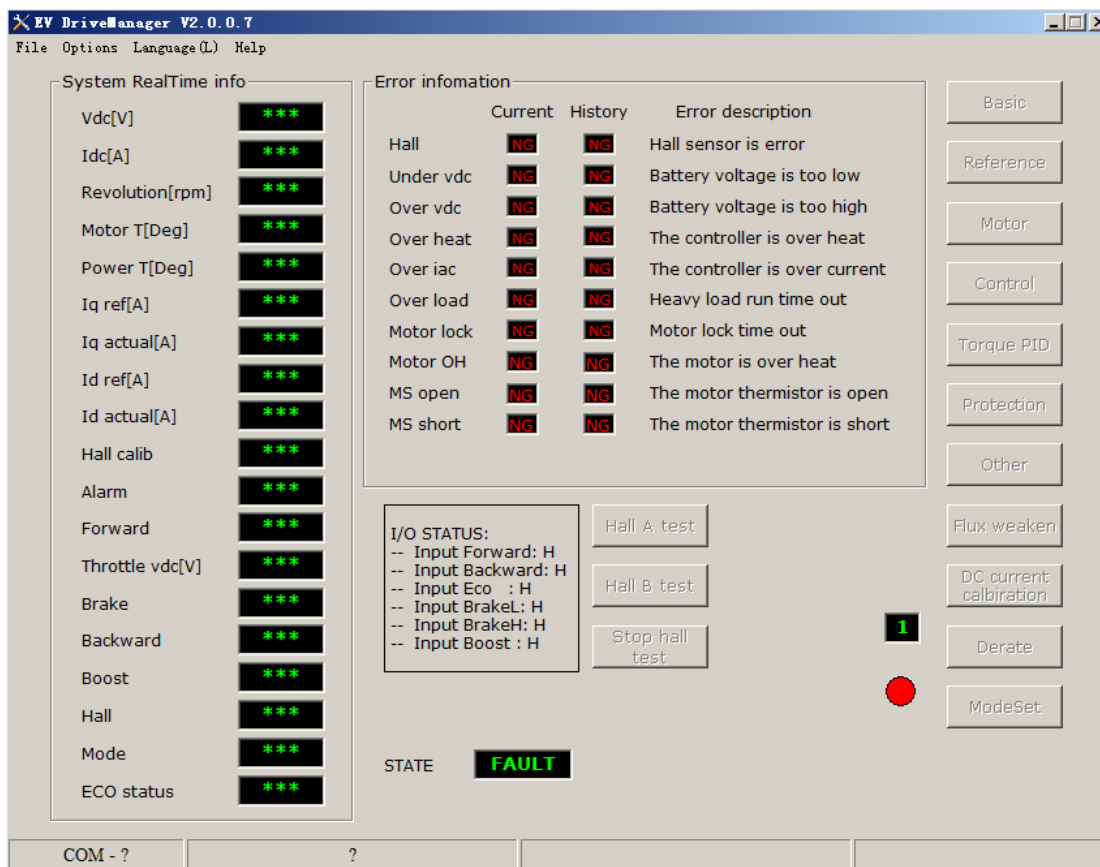
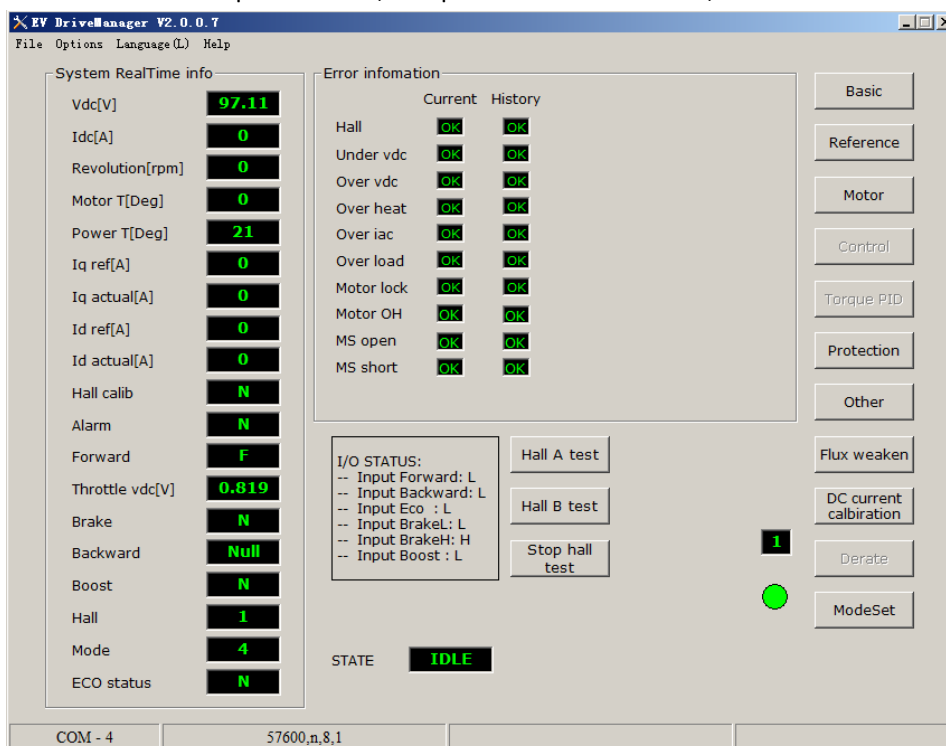


Instructions to set motor speed

1) connect the pc software(EV DriveManager V2.0.0.7) to motor controller with usb2RS232 cable and DB9 to 10-pin connector.

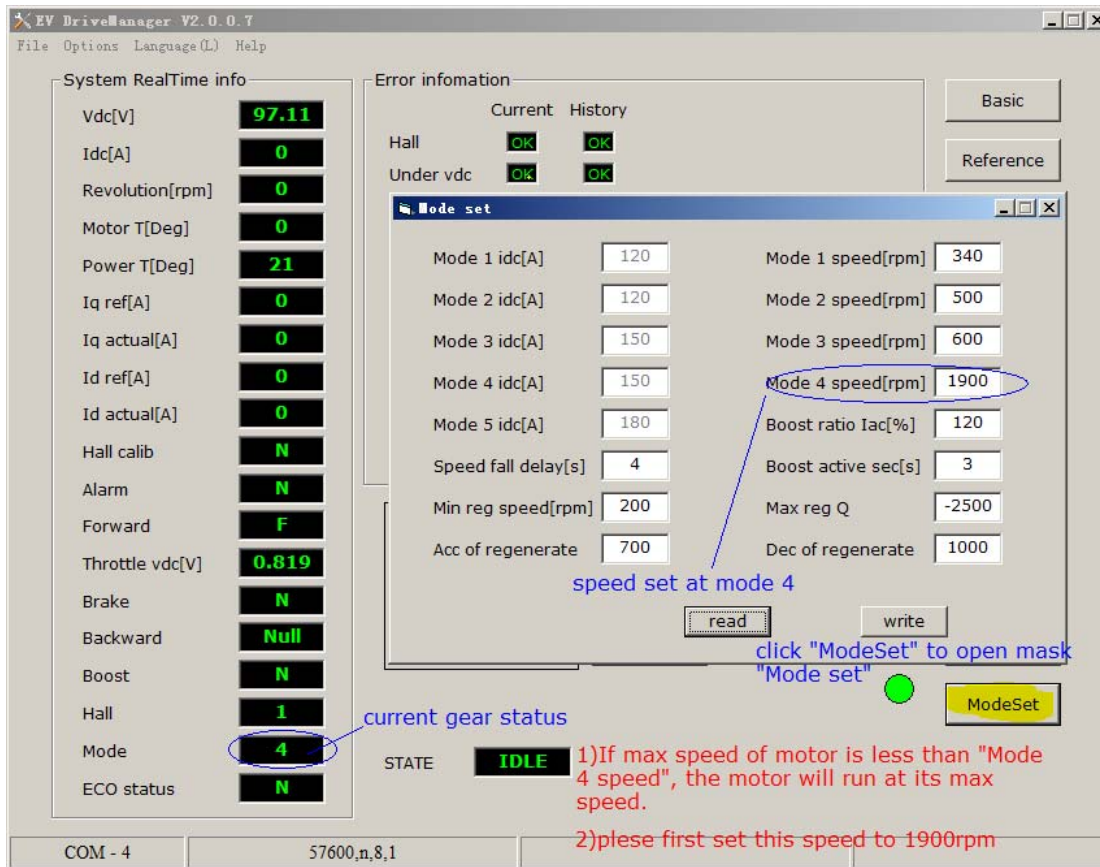


after select the com port number, and power on the controller,



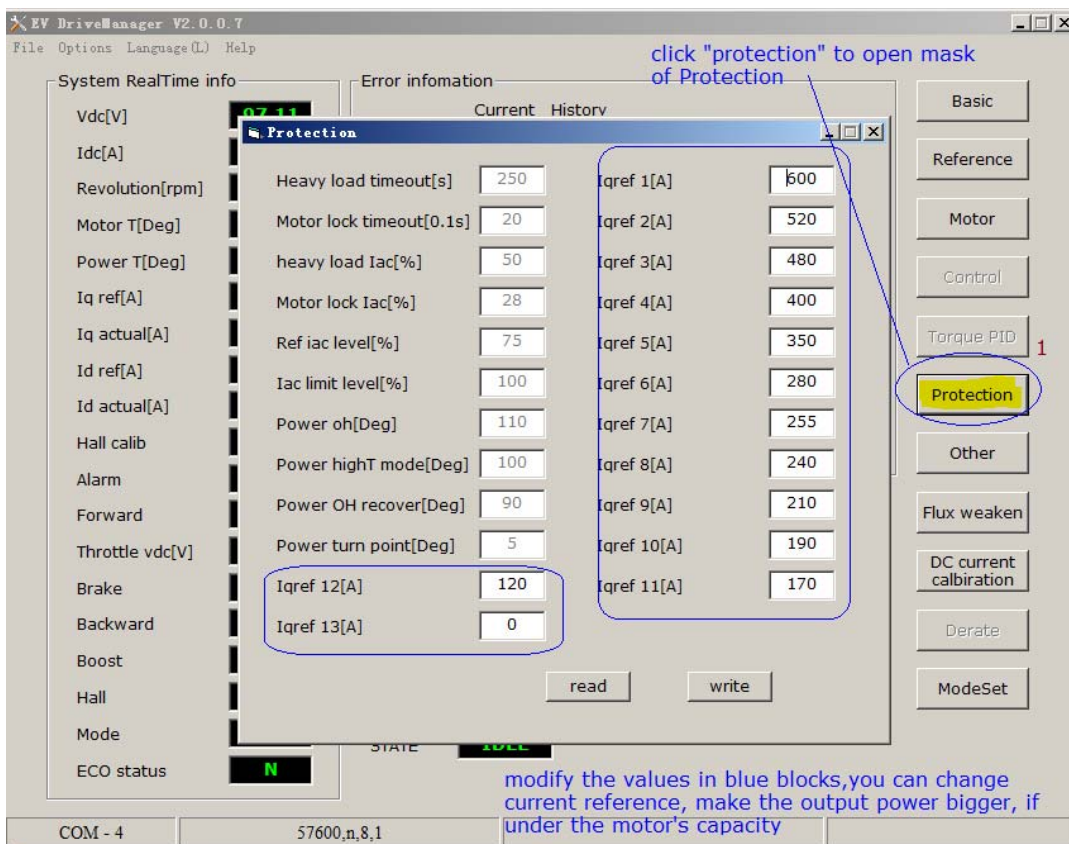
2)set the mode 4 speed to 1900rpm.

do as the following figure to set mode 4 speed to 1900rpm. Before setting ,check the mode number in "System RealTime info" is "4". if not 4, please connect your support service.



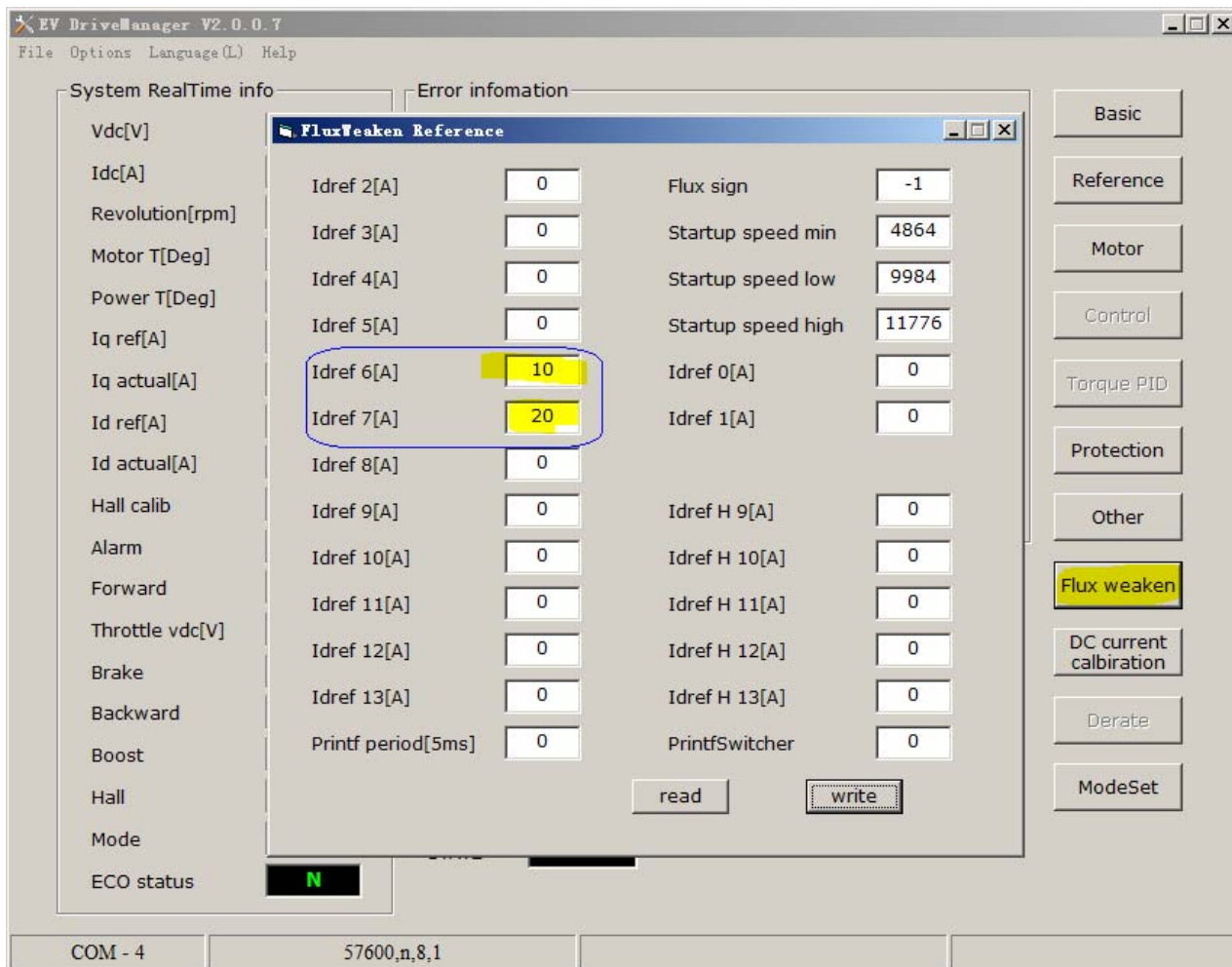
3) confirm iqreferences at speeds.

Please refer to the another excel file, "Current reference tune sheet"



with the former method, If you still can't reach the speed you wanted as 130kph, about 1146rpm of motor speed. you can

tune the flux reference as following figure.



please set Idref 7 not smaller than Idref 6, and both the values smaller than 80.
Don't set these two value much bigger, otherwise the system efficiency will be lower.